



The Charolais Pavilion,  
Avenue M,  
Stoneleigh Park, Kenilworth,  
Warwickshire, CV8 2RG  
t: 024 76 697731  
f: 024 76 697776  
www.rugbyfarmersmart.com  
Holding No. 43-139-8013

Office Hours: Monday to Friday – 9.00am to 5.00pm  
Opening Time: Gates open at 5.30am until further notice

## Market Reports For Monday 25th April 2016

### Market At A Glance

Prime Heifers to 197p/kg & £1,143

Prime Bulls to 170p/kg & £1,075

Cows to 167p/k & £998

Spring Lamb to 233p/kg & £98

Spring Lamb SQQ 222.56p/kg

Hoggs to 217p/kg & £112

Hogg SQQ to 193p/kg

Cull Ewes to £140

Calves to £300

**9TH MAY SALE OF STORE CATTLE**

**14TH MAY BREEDING CATTLE SALE  
INCLUDING PEDIGREE BEEF SHORTHORN SALE**

Catalogues & Entry Forms available by post, email or on the website  
[www.rugbyfarmersmart.com](http://www.rugbyfarmersmart.com) ~ [admin@rugbyfarmersmart.com](mailto:admin@rugbyfarmersmart.com)

***There will be NO Cattle  
on Bank holiday Monday 2nd May***

***From Monday 2nd May Spring Lambs will be  
sold first at 10.30am followed by the Hogs***

***There is no longer any need to fill out Anthrax  
forms when you bring stock into the market***

***The funeral of the late Ted Lane  
will take place at 11.30am on Monday 9th May  
at St. John Baptist Church, Wolvey***

**CATTLE: 25 forward**

**Prime Cattle : 14 forward**

A yarding as lacklustre as the trade with only one clean beast in the ring that even resembled an R grade. Buyers only keeping up appearances and no trade for any sort really.

Butchers Heifers the most wanted and Parry Walters selling to 196p/kg looking a good shot.

Bulls to 170p/kg from J Hart and looking a good shot on the trade.

***Auctioneer: Tom Wrench***

HEIFERS: 6			
Top prices per head			
Limousin x	580 kgs	£1,142.60	DTP & PA Walters
Limousin x	594 kgs	£1,021.68	DTP & PA Walters
Hereford x	700 kgs	£952.00	FE & CJ Barnett
Hereford x	627 kgs	£877.80	FE & CJ Barnett
Beef Shorthorn x	610 kgs	£866.20	GM & LD Robson
Top prices per kilo			
Limousin x	580 kgs	197 p/kg	DTP & PA Walters
Limousin x	594 kgs	172 p/kg	DTP & PA Walters
Beef Shorthorn x	610 kgs	142 p/kg	GM & LD Robson
Hereford x	627 kgs	140 p/kg	FE & CJ Barnett
Hereford x	700 kgs	136 p/kg	FE & CJ Barnett

## Friday Store Cattle : 614 forward

A record entry for a spring sale through this ring with 630 passing through for the Spring Show and Sale. This year our sincere Thanks to Hugh Brightwell of Irthingborough for casting his expert eye across the cattle. Perhaps not the overall quality on show this year compared to last but Hugh did pick some excellent cattle for Champions and Reserve Champions. Champions for both Steers and Heifers this year to John and Denise Davies and Reserve Champion right behind from Chris and Bridget Price. Hugh later commented how close a competition it had been to his mind, with quality throughout both exhibitors consignments. We started with three small herd dispersals or part dispersals. First in the ring some smart Cows and Calves from Richard Lowe saw 2013 Limousin Cows with calves at foot to £1600 and £1420, £1400 x2 and £1310. Hussey Farms dispersed there April calving herd of commercial Cows to see aged Cows 2009 to £1330 with its 3 week old Hereford Bull Calf whilst Stabiliser Cows 2009 sold to £1030. A good run of out-wintered in-calf Cows from W J Chase saw 2007 Angus cows due in June to £990 with aged Cows £800 to £970. Then followed 5 incalf heifers due to Autumn calving from C H Evans saw Simmental Heifers 18 months at £1160 to £1030. Spring was in the air, despite the weather, when selling Stock Bulls. A young Limousin from Hornesberrie Farms sold to £1950 but the Star of the show a 5 year old Limousin from Richard Lowe with Dinmore FC.UK returning £2800.

On into the Store cattle. When reporting I always make a point of trying to express a clear and honest appraisal and trade today can be described only as very good, with buyers given all they could to stay invested in the Beef industry. It is true to say that the worst bred or done cattle are increasingly hard to find customers for. Cattle though that hit spec, showed future potential or honesty met a fair trade throughout. Young Angus from the Familie Wathes took £625 for 6 months with Sisters £500. Power rewarded and second prize Steers from CBE Price saw Limousin pens at £800 7 – 8 months whilst Heifers showed shape power and tonnes of potential equal money. Champions of the day though to JL & DA Davies who went on to sell 10 month old Limousin to £820 and 11 month old £850 whilst Champion Heifers sold to £840 at 9 months. Brian Mawby showed stylish cattle at 12 months to see £910 for Limousin Steers with 14 months £980 and 11 months £845 sisters to the same £740. Messrs Semple stepped up to show continued strides forward in breeding to show 12 and 13 month Limousin Steers to £940 x 2 and £920 x 5 and even sisters to £825. Moving up the ages just as much trade with 14 month old Angus heifers from R A Stephens taking £900. John Stephens then continued the momentum at £865 for 11 month Limousins with others £815

and older brothers £1010 at 21 months. Tom Lowick showed consistency selling 11 month old Limousin Steers at £800 and sisters £750. Smart heifers from C H Evans took £880 for Simmental x at 13 months with 14 months at £940. The first consignment of Cattle from E A Hull, Essex for 2016 saw some real quality forward and well contested. Steers from Edward saw £920 for a pen of 6 yearling Salers and Limx. Younger cattle 6 months from Edward took £840, £825, £810. Just the one pen of sisters took £725. Power from Charlie Barnwell saw 13 month Steers to £985 for a pen with 14 month £975 and £950. Up the ages and H Lawton & Son, Nuneaton took £900 for South Devon Steers at 17 months whilst 15 month Blue x dairy Steers done well took £810. R J Wright had £950 for Angus Steers at 15 months. R S Beaty showed 16 month Simmental Steers to £1010 for a large pen and others £990 and £960. F S Harwood, Milton Keynes showed Angus Steers at £1030 19 months with 15 months £940. Strong Charolais Heifers from J C Bostock, Kenilworth £1040 for a pen of 5 at 23 months. A marvellous run of 32 Charolais and Simmental from EJ Taylor & Son average £1027 topping at £1180, £1160 x 2, £1155 x 2 £1140 x 3 whilst heifers to £1090 all 22 to 27 months of age. Strong South Devons from Rob Milner to £1045 at 20 months of age whilst T Baker, Gilmorton £1045 for Herefords. RG & RD Robinson showed size and strength to see £1130 at 24 months for Beef Shorthorns. A trade to show a fair return throughout. The importance of buyers and selling catching eventual profit though must be monitored in these times more than ever before.

**Auctioneer: Tom Wrench**

## Calves : 5 forward

A smarter show of Calves forward today, with a strong following for quality. Top today a Blonde x Bull Calf from GE Pountney to £300. British Blue x Heifers from MJ Sharlot to £180 and £140 with only Black and Whites under, still topping at £46. More Calves needed each and every week.

**Auctioneer: Tom Wrench**

### NEXT MONDAY

- 1 British Blue x Heifer Calf 5 weeks old
  - 2 Black & White Bull Calves 7 weeks old TB tested
  - 1 Black & White Bull Calf 4 weeks old
- from RR Barrett & Son

## **SHEEP: 2,789 forward**

### **Prime Hogs: 1,959 forward SQQ 193p/kg**

Another good yarding and trade ahead of any in the country with an SQQ of 193p/kg buoyed by a number of very good Hogs sold at the end of the sale. Trade though sticky for the very lean and awkward sorts on offer That said quality wanted and buyers from distance on the phones trying to buy the better sorts in the Euro Spec. Top ppk today to S Clark, Aylesbury with Beltex at 217p/kg for 34.5kg for a pen full on 21, others 210p/kg at 40kg whilst Frank Osborne 206p/kg for 39kg Texels and R Woodward 204 and 205p/kg for 39 and 45kg 145 Hogs today 200p/kg plus. In the over weights a top of 200p/kg for R Randell & Son at 46kg for Texels with Roger Woddward 196p/kg for 46.5kg. W S Harrison & Sons 194p/kg for 49kg with Chris Bagshaw equal at 48kg. In the lump Euro Hogs coming to £92 for R Woodward at 45kg whilst R A Deeley £90.50 for 44.5kg and C J Whitehead & Son 45.5kg at £89. Overall a top today for long distance travellers up from Kent to take £112 for a pen of 11 Texels from P Mays at 68kg. M Morris had £105 for 66kg and Stuart Pearman, Tewkesbury £100 at 60kg. Overall more trade than could be expected but number in the aisles appealing to buyers in preference to shopping at smaller outlets. Please though be aware teeth are cutting fast. Also sheep arrivals seem to be getting ever later. We did have a completely empty sorting race between 8 am and 8.30 today.. thereafter we weighed 2000 sheep from 9 am to 11.30am. Avoid the que and get your stock in on time please.

### ***Auctioneer: Tom Wrench***

Prime Hogs: 1,959 SQQ (193p/kg)			
Per kilo - EURO under 45.5kg			
Beltex x	34.50 kgs	217 p/kg	S Clark
Beltex x	40.00 kgs	210 p/kg	S Clark
Beltex x	39.00 kgs	206 p/kg	FA Osborne
Beltex x	39.00 kgs	205 p/kg	R Woodward
Beltex x	45.00 kgs	204 p/kg	R Woodward
Per head			
Texel x	45.00 kgs	£92.00	R Woodward
Texel x	44.50 kgs	£90.50	RA Deeley
Texel x	44.00 kgs	£88.00	AA Fyfe & Sons
Beltex x	43.00 kgs	£87.50	S Clark
Texel x	44.00 kgs	£87.00	FA Osborne

Per kilo - HEAVIES 45.5kgs plus			
Texel x	46.00 kgs	200 p/kg	R Randall & Son
Beltex x	45.50 kgs	198 p/kg	J Clark
Texel x	46.50 kgs	196 p/kg	R Woodward
Beltex x	45.50 kgs	196 p/kg	CJ Whitehead & Son
Texel x	49.00 kgs	194 p/kg	WS Harrison & Sons

Per head			
Charollais x	68.00 kgs	£112.00	PM Mays
Charollais x	66.50 kgs	£105.00	M Morris
Texel x	63.00 kgs	£100.00	S Pearman
Texel x	60.00 kgs	£99.00	R Randall & Son
Charollais x	61.50 kgs	£99.00	DP Mitchell & Son

### **Spring Lambs: 296 forward SQQ 222.56p/kg**

Prime lambs beginning to grow in numbers and just shy of 300 penned today to a customer base showing improved demand. An SQQ today of 222.56p/kg representative of increased demand and a better quality of Springer than seen so far this year. Top PPK today to Hyde Lane Farms with 233p/kg for 19 Charolais at 37.5kg with R Taylor equal weight to 232p/kg and P T Harris & Son, Northampton 231p/kg for 39kg. In the gross D Dashwood top man at £98 equal with Michael Peason for 44kg with heavies from A V Boffey also £98 at 47kg. Trade needs monitoring though as alternative centres show returns around the 200p/kg mark.

### ***Auctioneer: Tom Wrench***

### Store Hogs : 50 forward

Less about today, and very much an end of season show. Top today £72 for Suffolk x from Linton farms, with Richard Smith hot on his heels at £70 also for Suffolks. Mid keep lambs £62-£70 with long keep and Rams under, £50-£55.

**Auctioneer: Tom Wrench**

### Breeding Sheep : 48 forward

A handful of In-lamb Ewe Hogs, together with two smart pens of Ewes and lambs making for a neat Breeding sheep section. In lamb Suffolk x Ewe Hogs to £82. Ewes and lambs from Ted Taylor to £40 per life, or £120 per family.

**Auctioneer: Tom Wrench**

### Cull Ewes : 443 forward

443 Sold today to an average of £83 showing a marvellous return for the quality on offer. Top today a Texel Ewe from TAW Farms returning £140. Blue Texels from H Timms to £126 whilst Colin Whitehead took a pair of Texels to £122. Top Suffolks a pair of Rams from Ted Taylor at £120. Plenty of meated weight Ewes over £100 today. Top Mules today to £96 from J Boulton with R Stephens £88 and Chris Whitehead £84. Keep them coming

**Auctioneer: Tom Wrench**

Cull Ewes & Rams: 443 forward					
Suffolk	£140.00	TAW Farms	Crossbred	£115.00	PK Cobley
Texel	£126.00	HM Timms	Crossbred	£113.00	DJ & EM Fountain
Texel	£122.00	CL & SJ Whitehead	Suffolk	£110.00	Hyde Lane Farms
Suffolk	£120.00	EJ Taylor & Son	Suffolk	£108.00	P Bates
Crossbred	£116.00	S Shedd	Texel	£108.00	R Randall & Son

### Friday Breeding Sheep : 425 forward

A new addition to the RFM Spring Calendar this year of a Ewe and lamb sale to kick of the Spring 'Turnout' Store sale day. Just over 250 Breeding Ewes sold to a inquisitive buying force of new and old Customers. Older Ewes with an average of 1.8 lambs sold between £52 a life and £60 for NCM. Texel and Beltex X lambs FM and broke ewes with doubles from Will Allan £72 per life. Ewe lambs a plenty with Continental with Singles all trading in the £70 to £80 region per life. A good show of North Country Mule Ewe Lambs with singles put forward. N Brown, Broadway showed fresh sheep with lambs to £75 per life whilst young Rory Wagstaff sold 38 ex Bentham Ewe lambs with Texel x lambs to £78. Top of the tree though for the best presented Mules from Hawes sold by Will Allan to £90 and £91 per life. A good show throughout. We repeat the event in May.

PRIVATE TREATY SALE: 25 Texel Ewe lambs with 1.3 lambs at foot.  
Call 02476697731

**Auctioneer: Tom Wrench**

### NEXT MONDAY

12 Texel x Ewe Lambs with 12 Charollais or Beltex lambs at foot  
On Heptavac P from R Reeve

12 Texel x Ewe Lambs with lambs  
from Barton Farms

15 North Country Mule Full Mouth Ewes with 24 Texel lambs  
On Heptavac P from C Betteridge

**FOR SALE**

Registered Pedigree Aberdeen Angus Bulls  
Well bred, TB tested and ready to work  
Call 07582 369674

**FOR SALE**

Working Collie Puppies  
Parents work both cattle and sheep  
Ready end of April, £150 dogs and bitches available  
07867 988364

**FOR SALE**

Pedigree Charolais Bulls  
Ready to work, TB4 Member of HI Health, Not been pushed  
Call Graham on 07860 765338

**FOR SALE**

Ford Ranger Thunder 2.5 Diesel  
100,000 miles, MOT 25th November 2016  
£6,000  
Call 07979 646731 Lutterworth  
(Leave a message if no answer)

**FOR SALE**

Barn stored straw  
Call 01926 817249

**WANTED**

Working Collie Bitch for working Sheep  
Sally Foote 07889 402742



**Land at Bubbenhall Road,  
Baginton**

Approximately 5.19 acres  
(2.10 hectares)

A mature pasture paddock suitable for equestrian  
and/or agricultural use.  
Good road access and river frontage.

**For Sale by Private Treaty**

Guide Price £60,000

**For Further Information contact Tim Howard or Emily Powell**

**7 – 11 Albert Street, Rugby, CV21 2RX**

**[www.howkinsandharrison.co.uk](http://www.howkinsandharrison.co.uk)**

**01788 564680**

**FOR SALE**

Collie Puppies ready mid May, All dogs  
Working parents both can be seen  
01327 361696 / 07714 429362

**FOR SALE**

Pedigree Saler Bull  
35 months old  
Call 07850 818850

## M & M Shearing Services

Shearing, Crutching, Bellying & Winter Shearing.  
All areas.

Matt Warren 07852 974055



J & B Gray  
Pailton Pastures  
**Pailton**  
Rugby  
CV23 0QN  
store@jbgrayfarming.co.uk  
07973 159903 / 01788 832652

**Your local family run grain storage solution whether it be  
long term/ short term/ full loads/ part loads.**

**Also available – whole farm (stubble to stubble) contracting  
operations.**

**GPS controlled Spraying and Fertiliser application.**

## **NORTHANTS LAND DRAINAGE CONTRACTORS LTD**

Althorpe Park Station  
East Haddon  
Northamptonshire. NN6 8DH



Trench Excavations from 100mm to 500mm width

Laser Control on all Machines

Civil Engineering Contracts

All Types of Fencing

Road Drainage

Slurry Lagoons

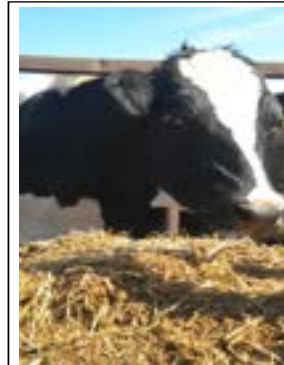
Bulk Excavation & Site Clearance

Plastic, Clay & Concrete Pipes Laid

### **TRENCHING SPECIALISTS**



Tel: 01604 770410 / 770320 Fax: 770406



**FINISHING CATTLE?**

**GROWING CATTLE?**

**FEEDING SHEEP?**

**DO YOU WANT**

**HIGH PERFORMANCE**

**COST EFFECTIVE**

**FULLY ASSURED**

**AND**

**COMPLETE FEEDS?**

THEN CONTACT

**BERRYSTOCK FEEDS**

TEL: 01788 890320

E-MAIL: john@berryfieldsfarm.co.uk

www.berrystockfeeds.co.uk

BERRYFIELDS FARM  
DAVENTRY  
NN11 8NP



**HARRIS & CLARKE**  
CHARTERED ACCOUNTANTS

*...Specialising In Agriculture...*

We aim to provide our clients with down-to-earth accountancy and taxation advice, recognising that what works for one client will not necessarily work for another



For further information or a free no obligation meeting please contact

John Harris or Richard Clarke

7 Billing Road, Northampton, NN1 5AN  
Telephone 01604 622274  
www.harrisandclarke.co.uk



# Farm Insurance Specialists

Call 01865 844994  
Visit [www.county-insurance.co.uk](http://www.county-insurance.co.uk)



County Insurance Services, County House, Dvina Court, London EC1A 3DF  
Lund, Halesworth, Suffolk, UK. All County Insurance Services are  
licensed and regulated by the Financial Services Authority (FSA)

# MIDLAND FEED SERVICES LTD

**“ Quality Feed at Competitive Prices ”**

**Midland Feed Services Ltd** provides a complete on-farm milling and mixing service. Rations can be varied from week to week and are precisely mixed to suit your animals - throughout their lifecycle. Our fleet of eight vehicles operates across the midlands and we are trusted for our friendly and reliable service.

## FEED FLEXIBILITY OPTIMIZES PROFITABILITY

- Rolled or ground
- Bulk or bagged
- Custom mixes
- Rations for all livestock
- Free nutritional back-up
- Analysis service available
- Weekly service in your area
- All types of bale processed
- Roughage processed for bedding
- Utilised straights and by-products
- Minerals and concentrates
- Sucked, blown and augered
- Liquid molasses
- Large or small quantities
- Variations to seasonal needs

Call us to discuss your requirements.

T: 01789 205391 / 266503

DAIRY BEEF PIG SHEEP HORSE



[www.midlandfeed.co.uk](http://www.midlandfeed.co.uk)





Your local, independent farm fuels, heating oil & lubricants supplier.

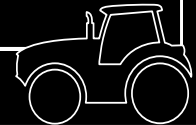


**Proud to be supporting  
The Rugby Farmers Market**

01675 437557 | [midlands@rix.co.uk](mailto:midlands@rix.co.uk) | [www.rix.co.uk](http://www.rix.co.uk)



## FARM INSURANCE WHERE YOUR OFFICE IS OUR OFFICE



We believe it's better to take the time meeting face to face on a farm, not around a desk.

**Call 02476 444519 for a quote or pop in**  
NFU Office, Meridian House, 6 Eastwood  
Business Village, Harry Weston Road, Binley  
Business Park, Coventry, Warwickshire CV3 2UB



**NFU Mutual**  
INSURANCE | PENSIONS | INVESTMENTS

It's about time®

Agent of The National Farmers Union Mutual Insurance Society Limited. For security and training purposes, telephone calls may be recorded and monitored.

Tom Reeve Contracting

## Agricultural, Commercial & Domestic Fencing



For all your fencing needs.  
Post and Rails,  
Stock Fencing,  
Panel Fencing,  
Close board Fencing,  
HLS/ELS Fencing,  
Hedge Coppicing,  
Tree and Hedge planting,  
& Much More.

**Always happy to quote.**



For more information or to contact Tom on;  
**01926 814731 or 07807 693858**  
[tom.reeve@aol.co.uk](mailto:tom.reeve@aol.co.uk)  
Also for Slot seeding, (Pasture improvement).  
Opico splitter for pasture de-compaction.

# T A R H I R E

## FOR HIRE

10 TON REAR DISCHARGE MUCKSPREADERS WITH SLURRY DOORS  
12 TON TRAILERS WITH HYDRAULIC DOORS

## CONTRACT

MUCK SPREADING SERVICE  
ADAPTABLE TO CUSTOMER NEEDS

**ROB DAWKINS (DAVENTRY) – 07801 791212**  
**ALAN CRAWLEY (HINCKLEY) – 07802 951179**  
**OFFICE – 01327 340367**

**TJ Auto Gates Ltd**  
**(Formerly TJ Agricultural Ltd)**  
**April 2016**

Dear All,

We wish to inform you that with immediate effect T J Agricultural Ltd (and existing telephone numbers) will be amalgamated into TJC Agricultural Engineering Ltd, managed and directed by Hal Cooper. All fabrication, tyres, hydraulic hoses, etc. will continue to be provided by TJC Agricultural Engineering Ltd.

We would like to take this opportunity to thank you for your continuous custom and unreserved support over the last 30+ years. This decision is not one which has been taken lightly, and was made more difficult by such loyal and valued customers like yourselves. My wife Jackie and I will continue to trade, as T J Auto Gates Ltd, installing and servicing a range of automated gates & barriers. If you would like any further information about such services please call

Trevor 07498993897.

We are confident that the positive changes ahead will serve you as well as we hope we have served you in the preceding decades. All that remains is for us to wish you all, along with Hal and Rebekah every success in the future, here's to the next 30 years!

Warmest regards,

Trevor & Jackie Johnson

# Rugby Farmers Mart Ltd

## Forthcoming Sales 2016

**9th May**

Sale of Store Cattle

**14th May**

Breeding Cattle

including the Beef Shorthorn Sale

**23rd May**

Sale of Store Cattle

Vendors who are wishing to sell stock please feel free to contact:

**Tom Wrench - 07774 723758**

**Steve Martin - 07960 085950**

who will gladly make  
A FREE ON FARM VISIT & VALUATION